

**What:** KGL Lobby Ceilings – Addition of Multiple Access Doors

**Where:** Levels 1, 2, and 3 (See plan attached. Typical for all floors)

**Start Date:** 11/23/2020

**Impact:** Limited access near access points when work is in progress. Temporary access doors will be installed to close ceiling at access points as necessary.

**Contacts:**

- Vic Hoyecki – Project Superintendent – (203)943-2950
- Pam Buonocore – KGL Operations Manager – (203)915-4651
- Mark Veroneau – Yale Associate Project Manager – (475)241-2476

GENERAL NOTES - CEILING PLAN

1. CEILING HEIGHTS ARE DIMENSIONED FROM FLOOR DATUM ELEVATION TO FINISHED CEILING
2. PROVIDE PAINTED MRGWB IN WET AREAS.
3. FULL COORDINATION OF SHOP DRAWINGS BETWEEN TRADES MUST BE SUBMITTED AND APPROVED PRIOR TO ELECTRICAL, HVAC, PLUMBING AND FIRE PROTECTION SERVICES BEING INSTALLED.
4. WHERE THERE IS A CONFLICT BETWEEN THE REFLECTED CEILING PLAN AND LOCATION OF FIXTURES AND DEVICES IN MECHANICAL, ELECTRICAL AND PLUMBING DRAWING, THE ARCHITECTURAL REFLECTED CEILING PLAN SHALL GOVERN.
5. CENTER CEILING GRIDS IN ROOMS UNLESS OTHERWISE NOTED OR INDICATED. PLACE LIGHT FIXTURES AND OTHER ELECTRICAL, HVAC AND FIRE PROTECTION DEVICES AS SHOWN.
6. DO NOT USE LESS THAN 1/3 OF CEILING TILE WITHOUT APPROVAL OF THE ARCHITECT.

**NOTE:**  
NEW CEILINGS THROUGHOUT CORRIDORS TO FACILITATE ABOVE CEILING MEPP WORK. REPLACE SUSPENDED GRIDS AND ACP IN CORRIDORS. FIXTURES AND DEVICES ARE TO REMAIN UNLESS OTHERWISE NOTED.

**RCP CEILING TYPE LEGEND:**

- ACP-2 2' x 4' ACP LAY-IN CEILING
- ACP-3 2' x 2' ACP LAY-IN CEILING
- DFS-1 DIRECT APPLIED FINISH SYSTEM
- GWB-1 ACOUSTIC GYPSUM PLASTER
- GWB-2 GWB CEILING
- GWB-4K USA 2 HOUR RATED CEILING
- PLS-1 PLASTER SKIM COAT ON BLUEBOARD
- ETR EXISTING CEILING TO REMAIN
- ETR-1 EXISTING CEILING, PNTD
- AREA OUTSIDE SCOPE OF WORK
- EXISTING EXPOSED WAFFLE SLABS

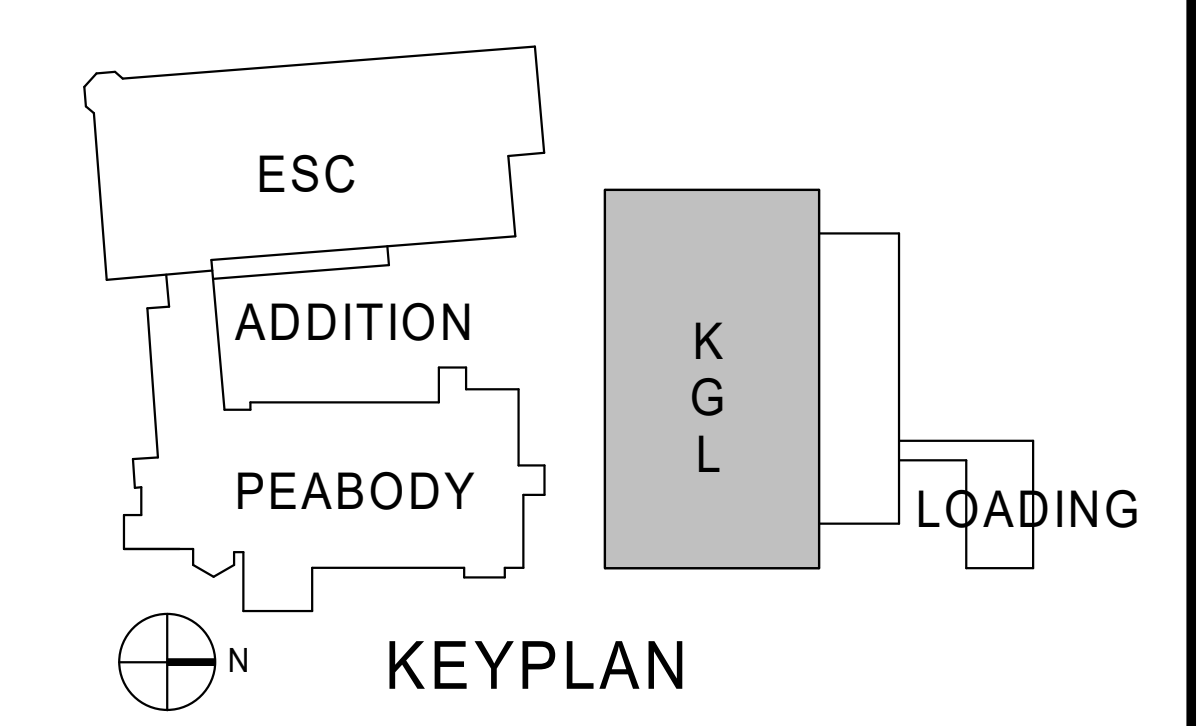
**RCP LEGEND:**

- LINEAR PENDANT - DIRECT/INDIRECT
- LINEAR PERIMETER COVE
- 1'x4' TROFFER LIGHT
- 2'x4' TROFFER LIGHT
- RECESSED DOWN LIGHT
- DIRECTIONAL TASK LIGHT
- PROJECTION SCREEN



Typical 2' by 2' access door cut in ceiling for MEP work. Actual locations to be determined in the field as needed.

**KGL 1st Floor Lobby Ceiling Access Location Work**  
**Yale Kline Geology Laboratory Code Upgrades**  
**Project**  
**New Haven, CT**  
**Turner Project No. 201026**  
**Data Date: November 6, 2020**  
**By: VJH**

M1 1st FLOOR REFLECTED CEILING PLAN  
1/8" = 1'-0"

NO.	DATE	REVISION

BID DOCUMENTS

PROJECT NAME  
Yale Kline Geology Laboratory Code Upgrades

BUILDING NAME & ADDRESS  
YALE KLINE GEOLOGY LABORATORY  
216 WHITNEY AVE, NEW HAVEN, CT 06511

DRAWING TITLE  
FIRST FLOOR RCP

SCALE: As indicated  
CAD FILENAME: 17081006 A2.10K  
DRAWING NUMBER: 17081006

DRIVEN BY: ECS  
DATE: 6/12/2020  
**A2.10K**

GENERAL NOTES - CEILING PLAN

1. CEILING HEIGHTS ARE DIMENSIONED FROM FLOOR DATUM ELEVATION TO FINISHED CEILING
2. PROVIDE PAINTED MRGW IN WET AREAS.
3. FULL COORDINATION OF SHOP DRAWINGS BETWEEN TRADES MUST BE SUBMITTED AND APPROVED PRIOR TO ELECTRICAL, HVAC, PLUMBING AND FIRE PROTECTION SERVICES BEING INSTALLED.
4. WHERE THERE IS A CONFLICT BETWEEN THE REFLECTED CEILING PLAN AND LOCATION OF FIXTURES AND DEVICES IN MECHANICAL, ELECTRICAL AND PLUMBING DRAWING, THE ARCHITECTURAL REFLECTED CEILING PLAN SHALL GOVERN.
5. CENTER CEILING GRIDS IN ROOMS UNLESS OTHERWISE NOTED OR INDICATED. PLACE LIGHT FIXTURES AND OTHER ELECTRICAL, HVAC AND FIRE PROTECTION DEVICES AS SHOWN.
6. DO NOT USE LESS THAN 1/3 OF CEILING TILE WITHOUT APPROVAL OF THE ARCHITECT.

RCP CEILING TYPE LEGEND:

	ACP-2 2' x 4' ACP LAY-IN CEILING
	ACP-3 2' x 2' ACP LAY-IN CEILING
	DFS-1 DIRECT-APPLIED FINISH SYSTEM
	GWB-1 ACOUSTIC GYPSUM PLASTER
	GWB-2 GWB CEILING
	GWB-4K U404 2 HOUR RATED CEILING
	PLS-1 PLASTER SKIM COAT ON BLUEBOARD
	ETR EXISTING CEILING TO REMAIN
	ETR-1 EXISTING CEILING, PNTD
	AREA OUTSIDE SCOPE OF WORK
	EXISTING EXPOSED WAFFLE SLABS

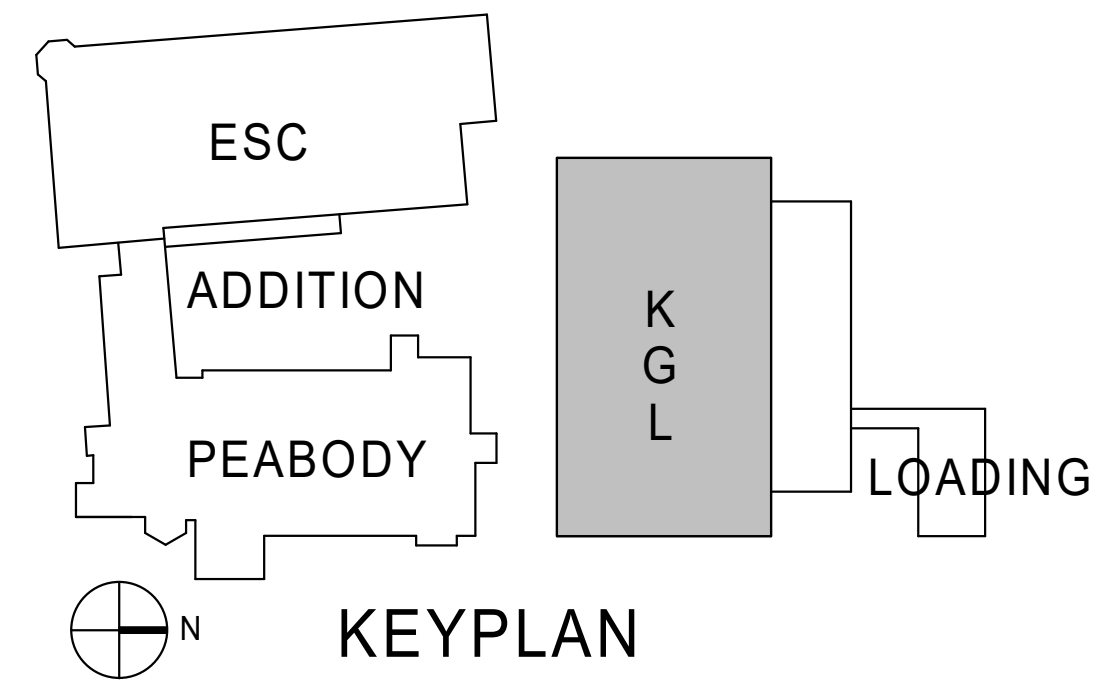
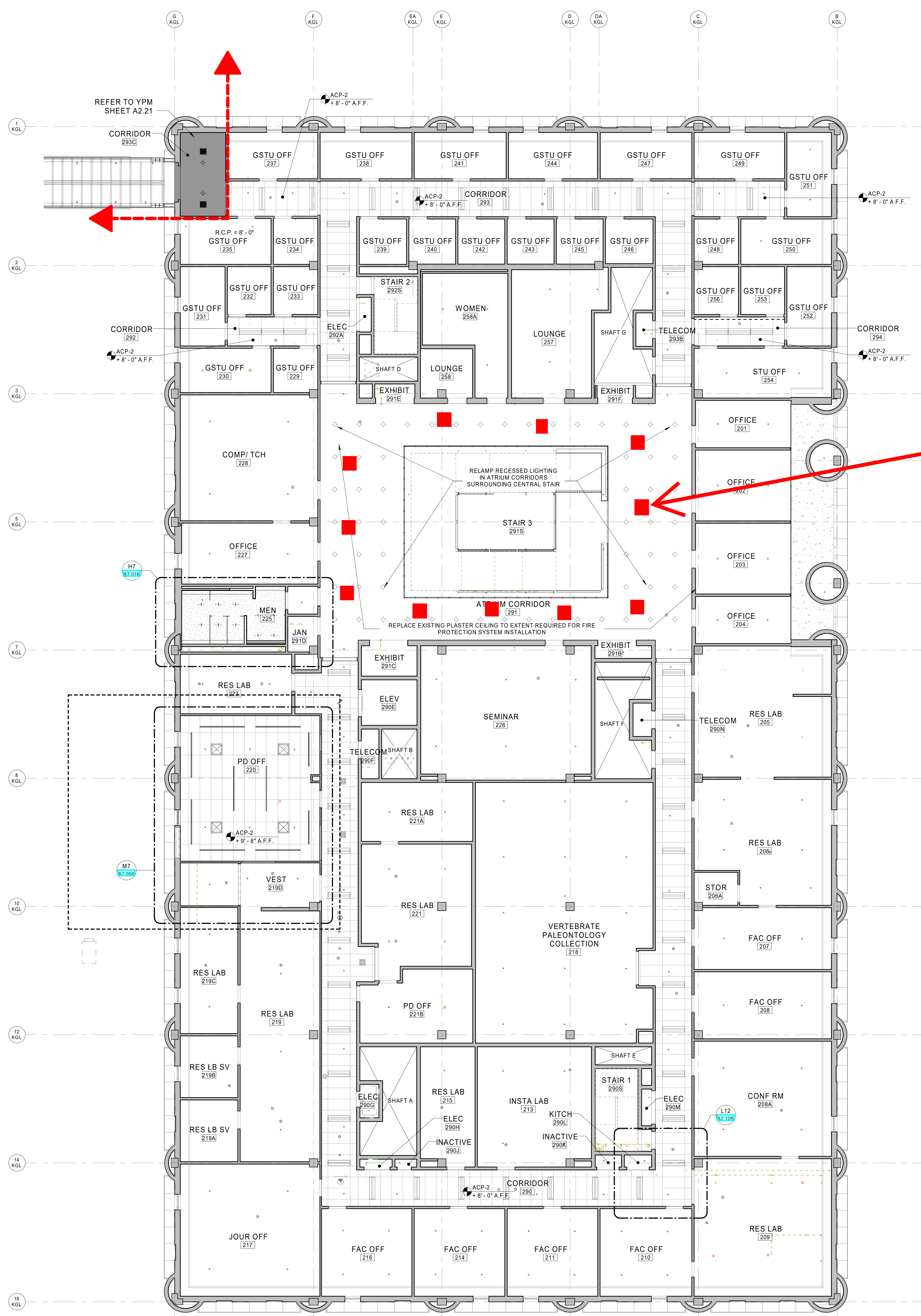
RCP LEGEND:

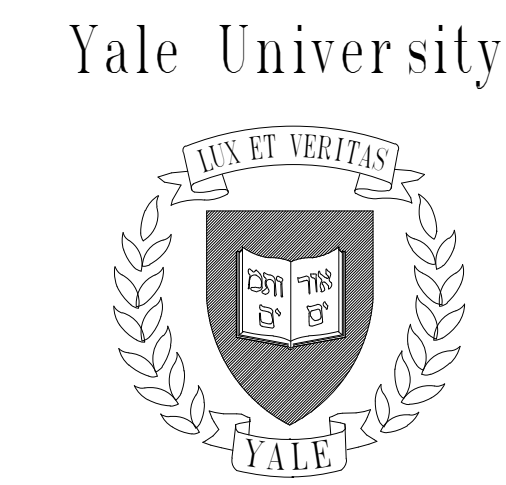
	- LINEAR PENDANT - DIRECT/INDIRECT
	- LINEAR PERIMETER COVE
	- TX4 TROFFER LIGHT
	- ZX4 TROFFER LIGHT
	- RECESSED DOWN LIGHT
	- DIRECTIONAL TASK LIGHT
	- PROJECTION SCREEN

NEW CEILINGS THROUGHOUT CORRIDORS TO FACILITATE ABOVE CEILING MEPFP WORK. REPLACE SUSPENDED GRIDS AND ACP IN CORRIDORS. FIXTURES AND DEVICES ARE TO REMAIN UNLESS OTHERWISE NOTED.

Typical 2' by 2' access door cut in ceiling for MEP work. Actual locations to be determined in the field as needed.

**KGL 2nd Floor Lobby Ceiling Access Location Work**  
**Yale Kline Geology Laboratory Code Upgrades Project**  
**New Haven, CT**  
**Turner Project No. 201026**  
**Data Date: November 6, 2020**  
**By: VJH**





Central Campus  
Office of Facilities  
2 Whitney Avenue  
New Haven, CT 06520

Acoustic and Audio Visual Consultant  
CAVANAUGH TOCCI ASSOCIATES Inc.  
Building Envelope Consultant  
LEAVITT ASSOCIATES Inc.  
Civil Engineer  
LANGAN ENGINEERING  
Code Consultant  
PHILIP R. SHERMAN, P.E.  
Landscape Architects  
JAMES CORNER FIELD OPERATIONS  
Lighting Designer  
CBLD Inc.  
Mechanical, Electrical, & Plumbing Engineer  
ARUP  
Structural Engineer  
GILZANZ MURRAY STEFICEK LLP  
Specification Writer  
KALIN ASSOCIATES Inc.  
**CENTERBROOK**  
Architects and Planners, LLP  
67 Main Street  
Post Office Box 955  
Centerbrook, Connecticut 06409-0955  
Telephone 860.767.0175  
Facsimile 860.767.8719

GENERAL NOTES - CEILING PLAN

1. CEILING HEIGHTS ARE DIMENSIONED FROM FLOOR DATUM ELEVATION TO FINISHED CEILING
2. PROVIDE PAINTED MRGWB IN WET AREAS.
3. FULL COORDINATION OF SHOP DRAWINGS BETWEEN TRADES MUST BE SUBMITTED AND APPROVED PRIOR TO ELECTRICAL, HVAC, PLUMBING AND FIRE PROTECTION SERVICES BEING INSTALLED.
4. WHERE THERE IS A CONFLICT BETWEEN THE REFLECTED CEILING PLAN AND LOCATION OF FIXTURES AND DEVICES IN MECHANICAL, ELECTRICAL AND PLUMBING DRAWING, THE ARCHITECTURAL REFLECTED CEILING PLAN SHALL GOVERN.
5. CENTER CEILING GRIDS IN ROOMS UNLESS OTHERWISE NOTED OR INDICATED. PLACE LIGHT FIXTURES AND OTHER ELECTRICAL, HVAC AND FIRE PROTECTION DEVICES AS SHOWN.
6. DO NOT USE LESS THAN 1/3 OF CEILING TILE WITHOUT APPROVAL OF THE ARCHITECT.

RCP CEILING TYPE LEGEND:

	ACP-2 2' x 4' ACP LAY-IN CEILING
	ACP-3 2' x 2' ACP LAY-IN CEILING
	DFS-1 DIRECT APPLIED FINISH SYSTEM
	GWB-1 ACOUSTIC GYPSUM PLASTER
	GWB-2 GWB CEILING
	GWB-4K 4 HOUR 2 HOUR RATED CEILING
	PLS-1 PLASTER SKIM COAT ON BLUEBOARD
	ETR EXISTING CEILING TO REMAIN
	ETR-1 EXISTING CEILING, PNTD
	AREA OUTSIDE SCOPE OF WORK
	EXISTING EXPOSED WAFFLE SLABS

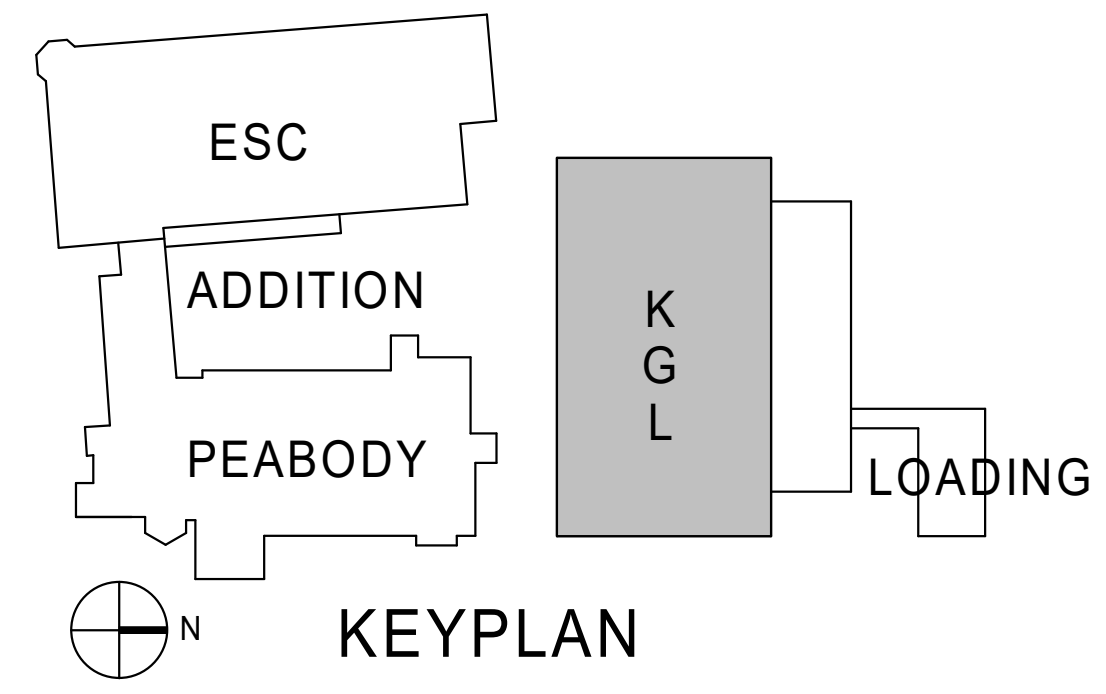
RCP LEGEND:

	- LINEAR PENDANT - DIRECT/INDIRECT
	- LINEAR PERIMETER COVE
	- 1'x4' TROFFER LIGHT
	- 2'x4' TROFFER LIGHT
	- RECESSED DOWN LIGHT
	- DIRECTIONAL TASK LIGHT
	- PROJECTION SCREEN

NEW CEILINGS THROUGHOUT CORRIDORS TO FACILITATE ABOVE CEILING MEP WORK. REPLACE SUSPENDED GRIDS AND ACP IN CORRIDORS. FIXTURES AND DEVICES ARE TO REMAIN UNLESS OTHERWISE NOTED.

Typical 2' by 2' access door cut in ceiling for MEP work. Actual locations to be determined in the field as needed.

**KGL 3rd Floor Lobby Ceiling Access Location Work**  
**Yale Kline Geology Laboratory Code Upgrades**  
**Project**  
**New Haven, CT**  
**Turner Project No. 201026**  
**Data Date: November 6, 2020**  
**By: VJH**



M1 3rd FLOOR REFLECTED CEILING PLAN  
1/8" = 1'-0"