

Yale Peabody Museum

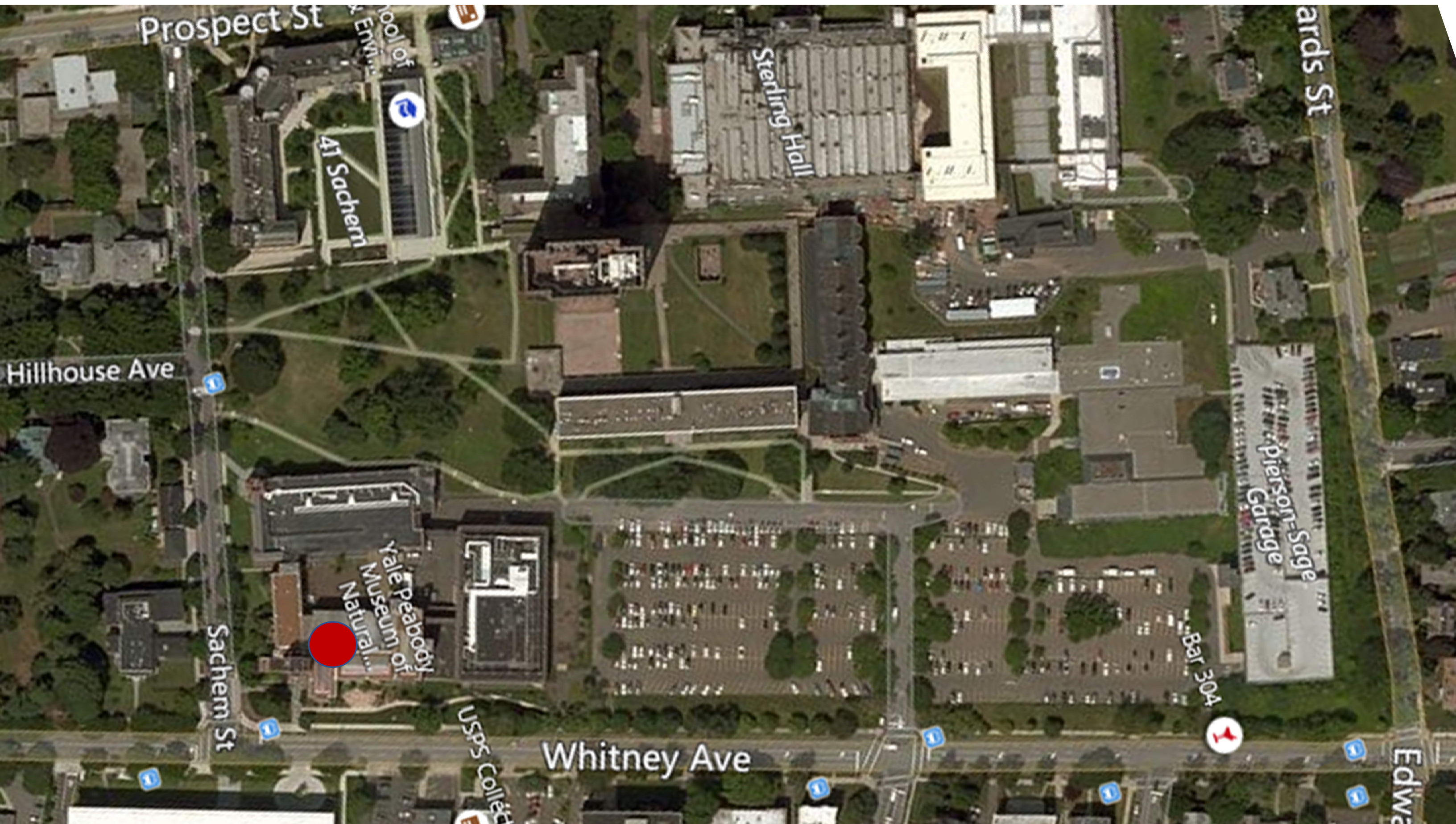
Project Review - KGL

CENTERBROOK

October 10, 2018

Goals

- Increase Yale student engagement with the Peabody
- Increase collections-based teaching and research
- Improve wayfinding and efficiency / Add Central Gallery
- Increase exhibit space, dynamism, programming potential
- Increase main campus collection capacity and improve access
- Enhance K-12 learning and logistics
- Relocate loading dock to allow infill addition
- Advance sustainability
- Maintain the Peabody character



Prospect St

AI Sacherri

Sterling Hall

Edwards St

Hillhouse Ave

Sachem St

Yale Peabody
Museum of
Natural History

USPS Collect

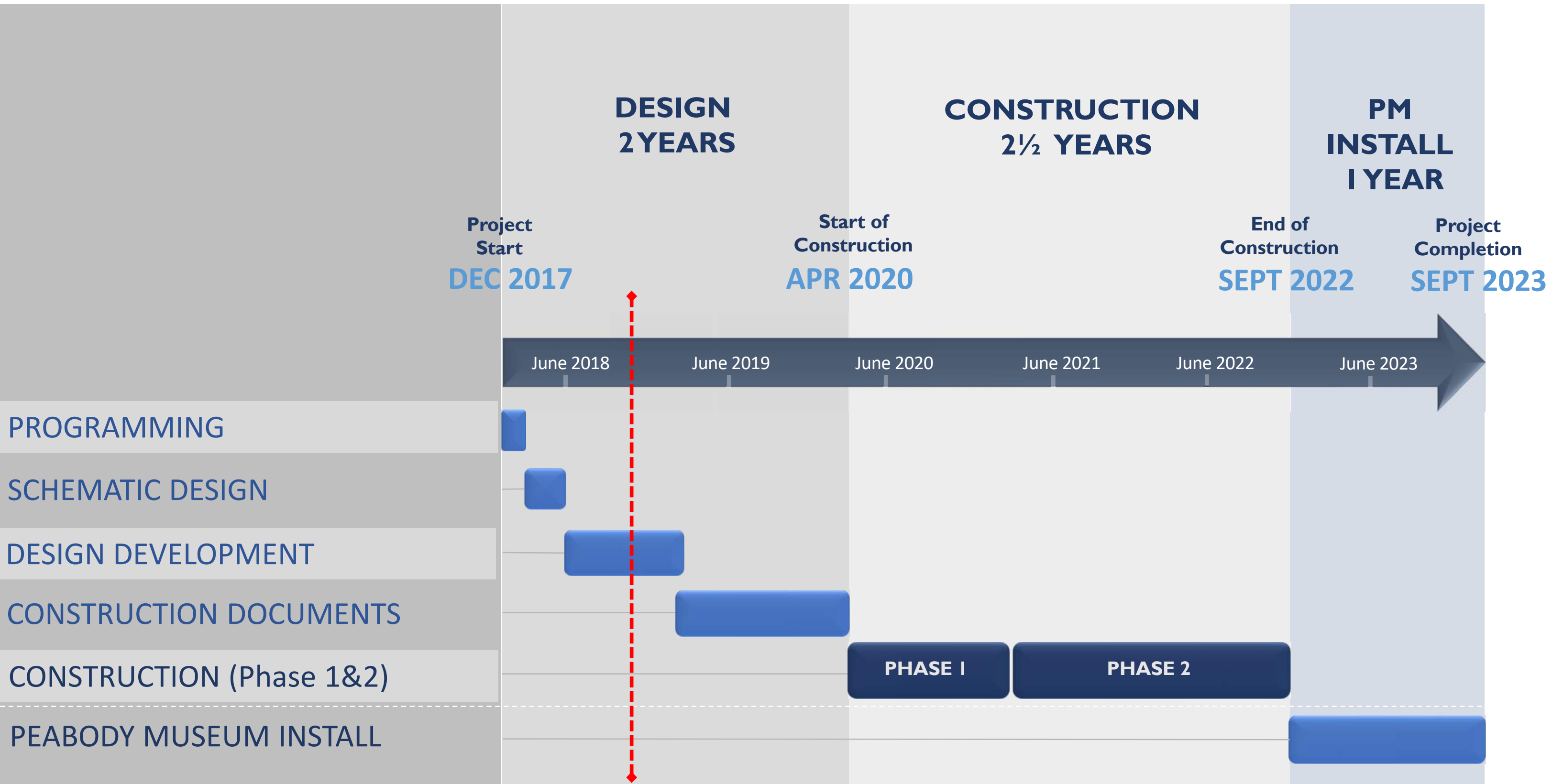
Whitney Ave

Garage
Sage

Bar 304

Edwards St

Schedule

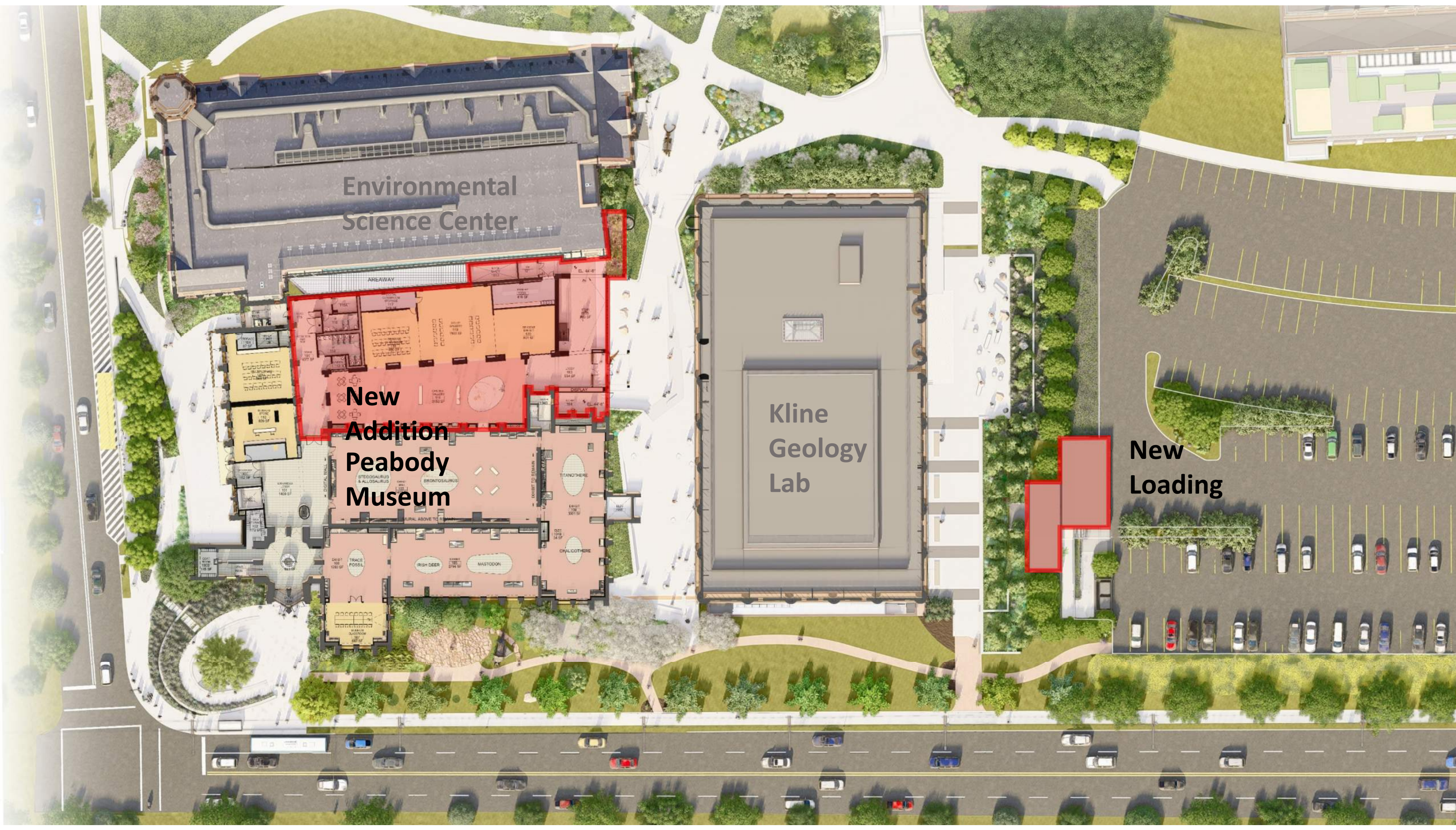


Environmental
Science Center

**New
Addition
Peabody
Museum**

Kline
Geology
Lab

**New
Loading**



Whitney Ave and Sachem St.



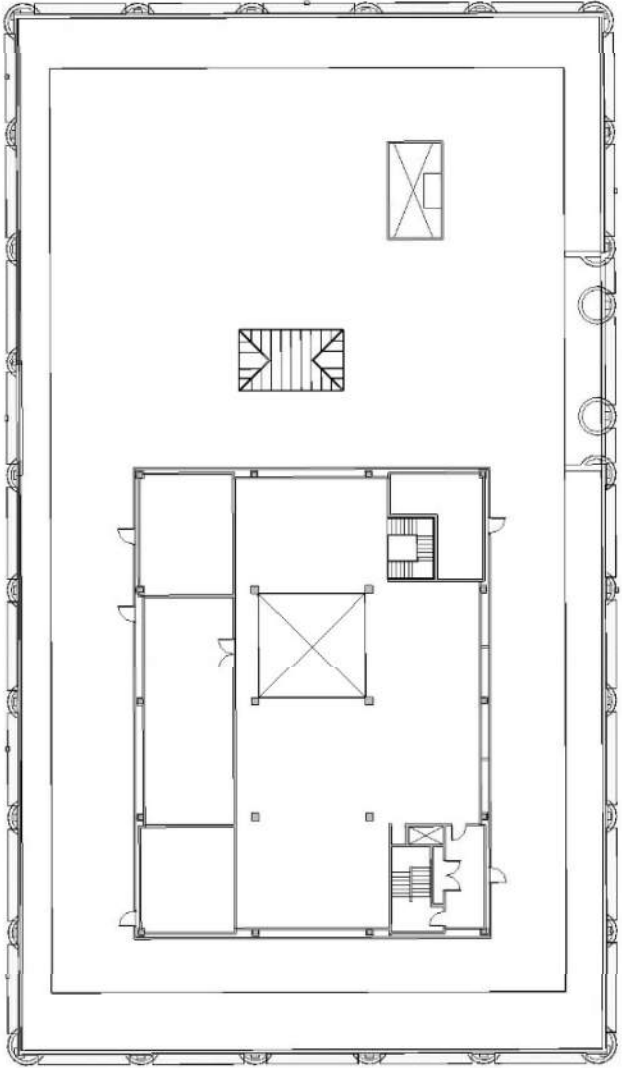
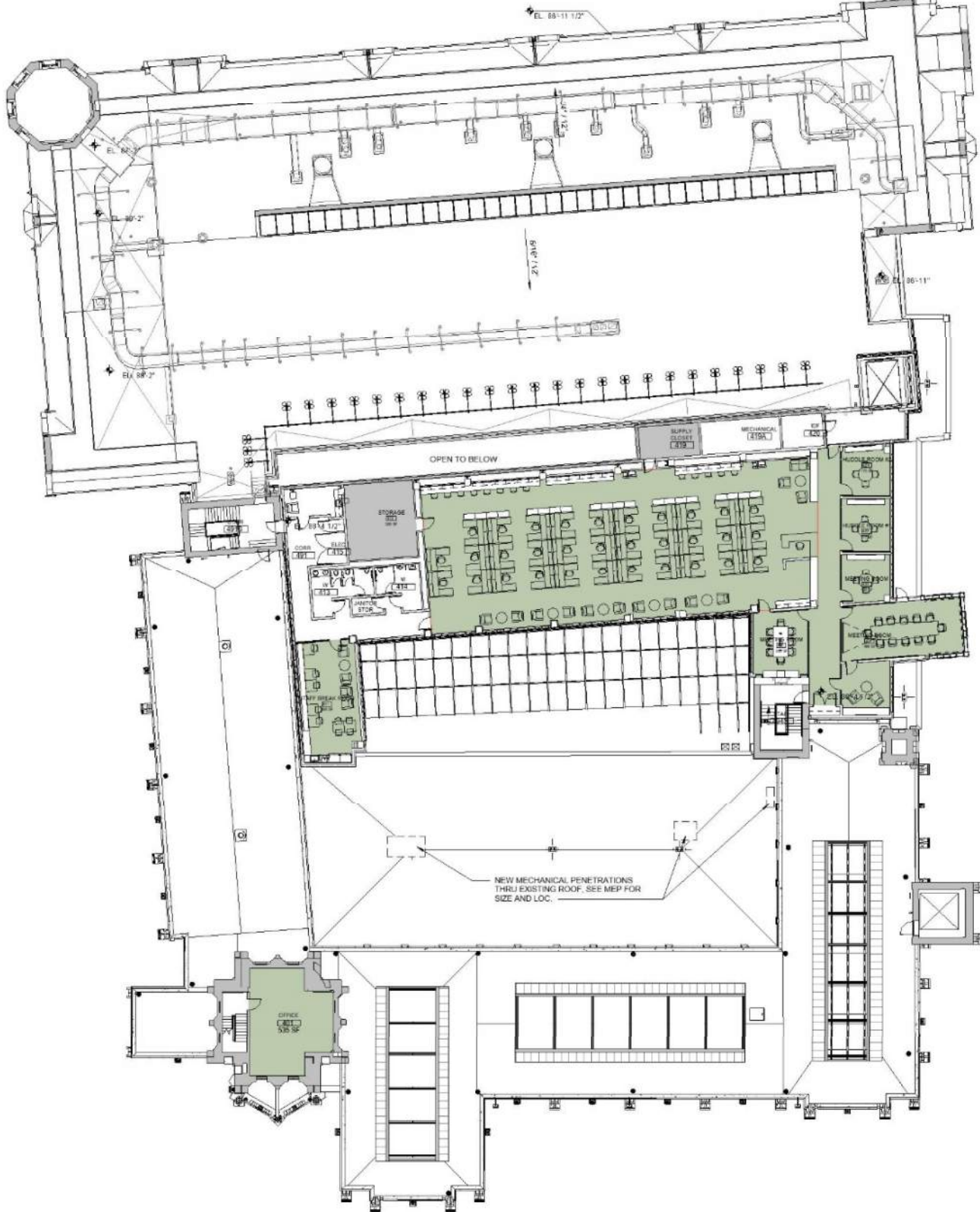
LOWER LEVEL



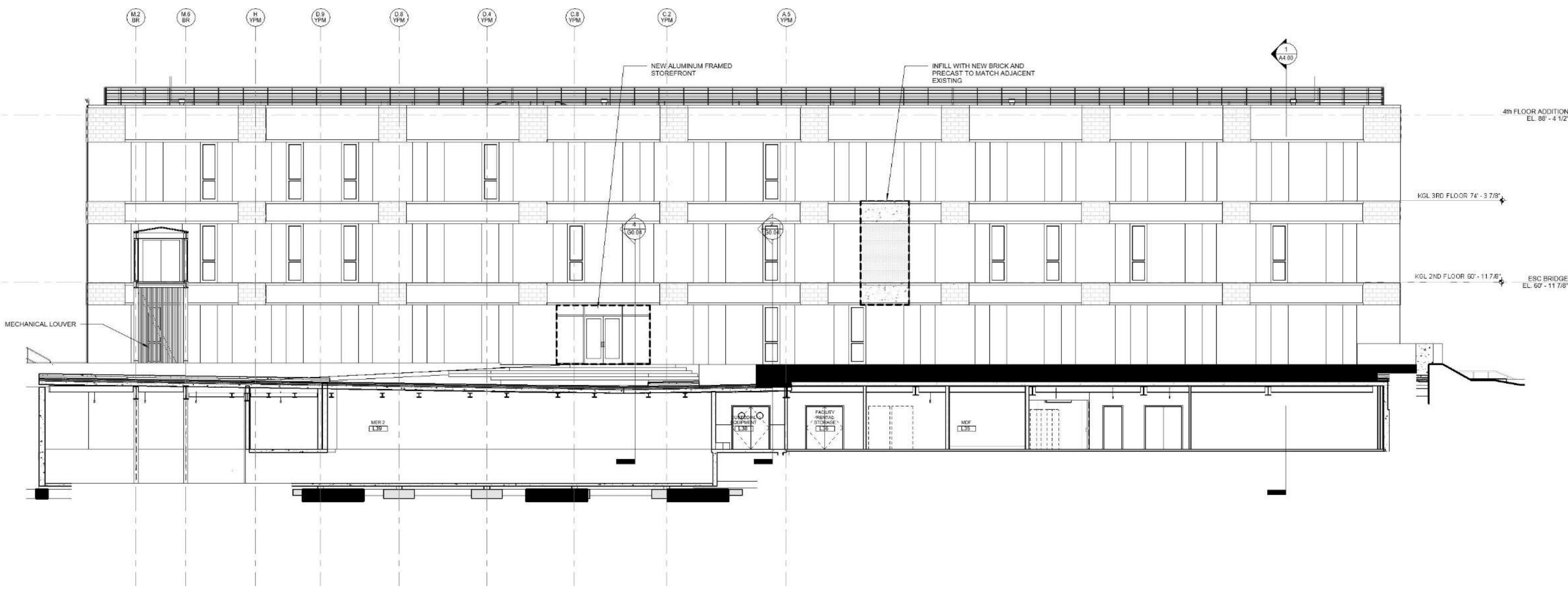
YPM – 3rd Floor



4TH FLOOR



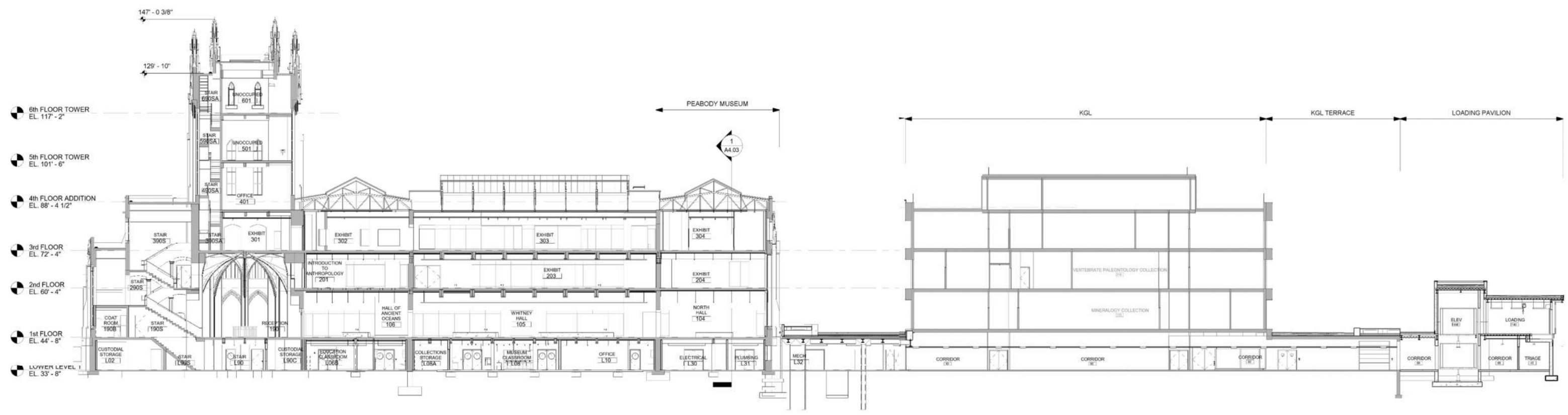
KGL – South Elevation

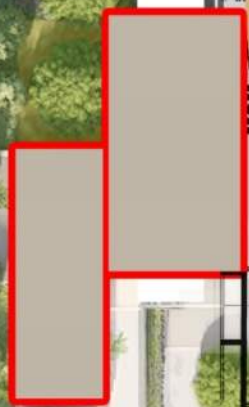
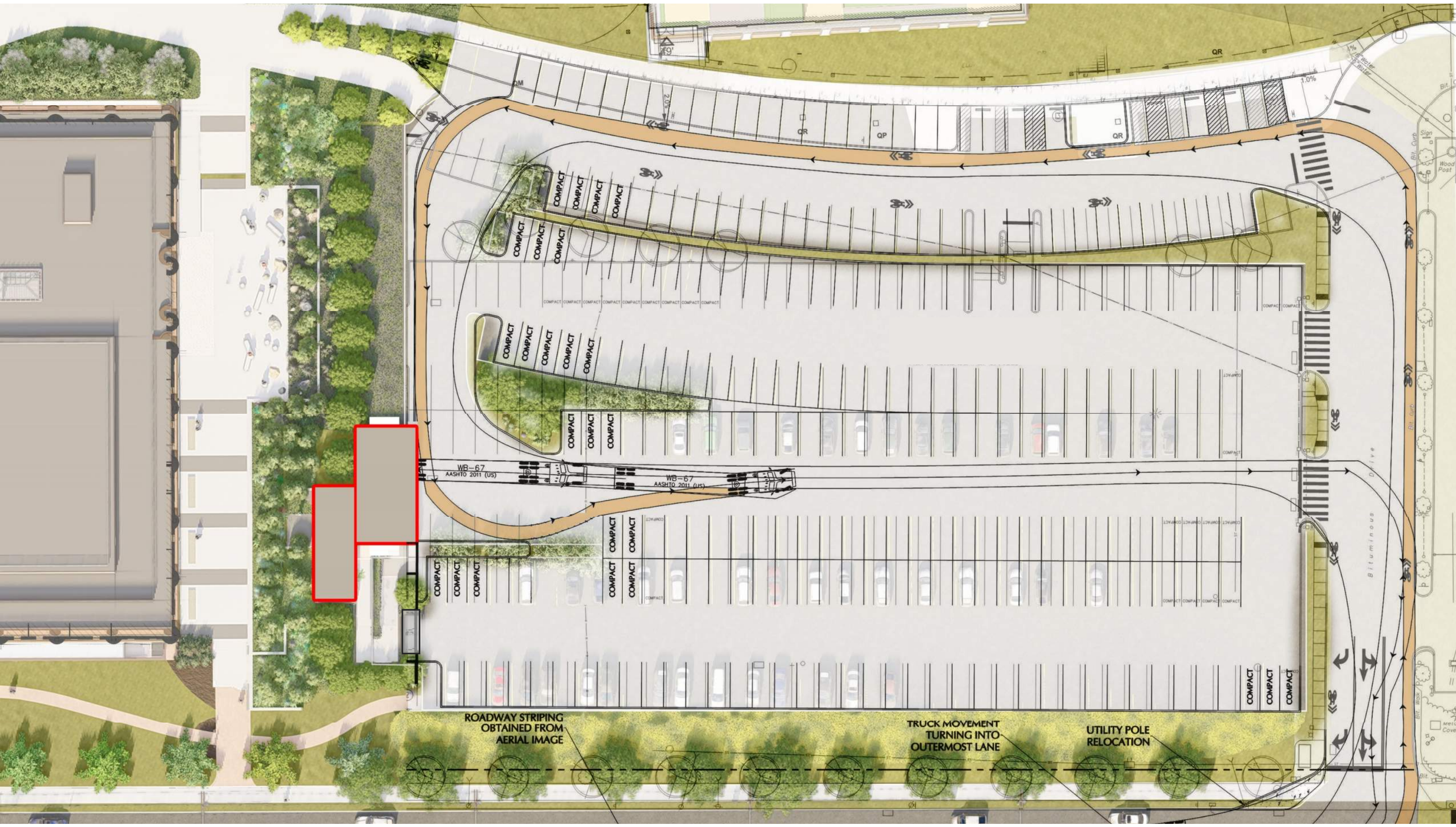


KGL – North Elevation



YPM – KGL – LP – Section





ROADWAY STRIPING
OBTAINED FROM
AERIAL IMAGE

TRUCK MOVEMENT
TURNING INTO
OUTERMOST LANE

UTILITY POLE
RELOCATION







KGL – Terrace View

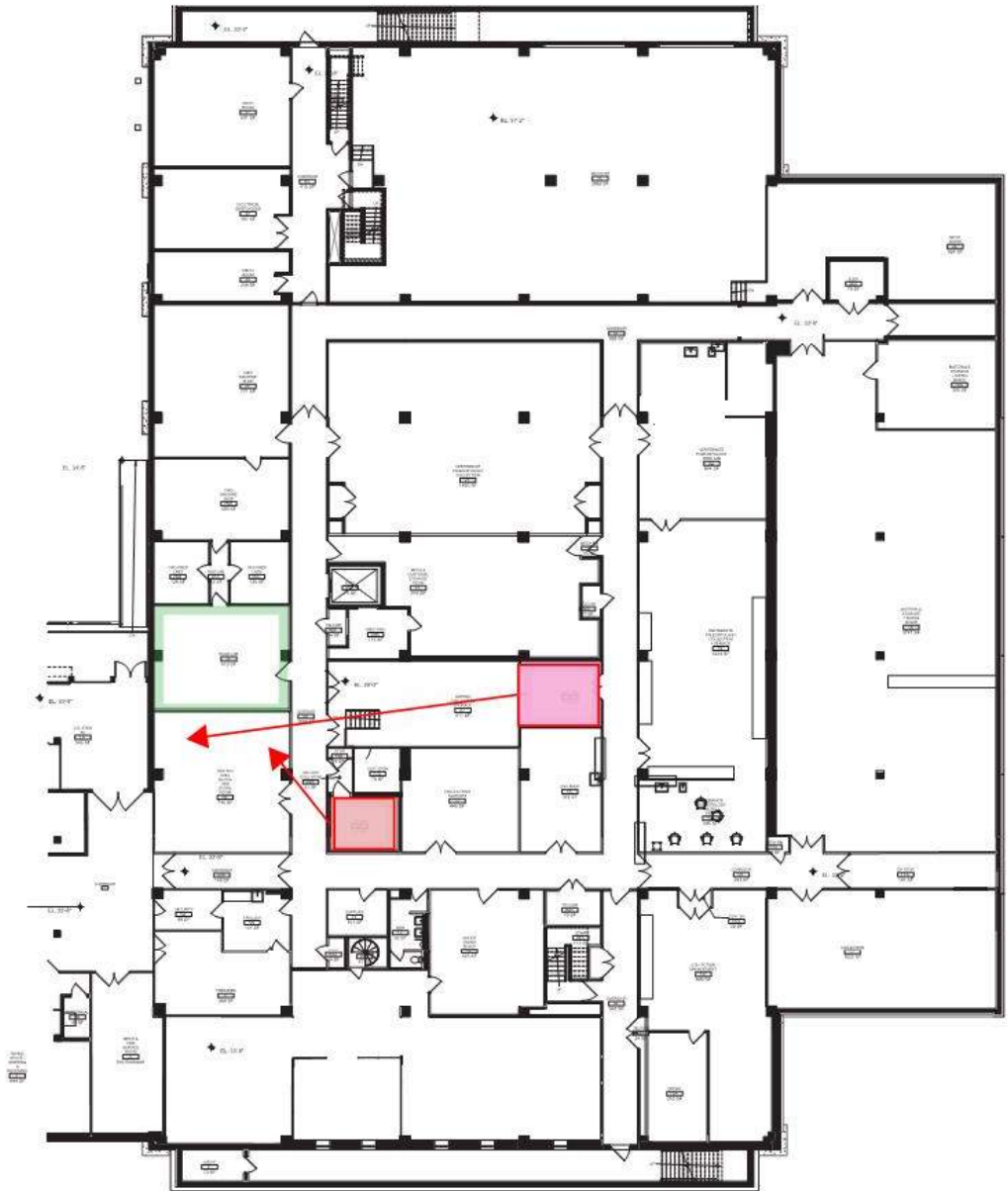


KGL – Terrace View



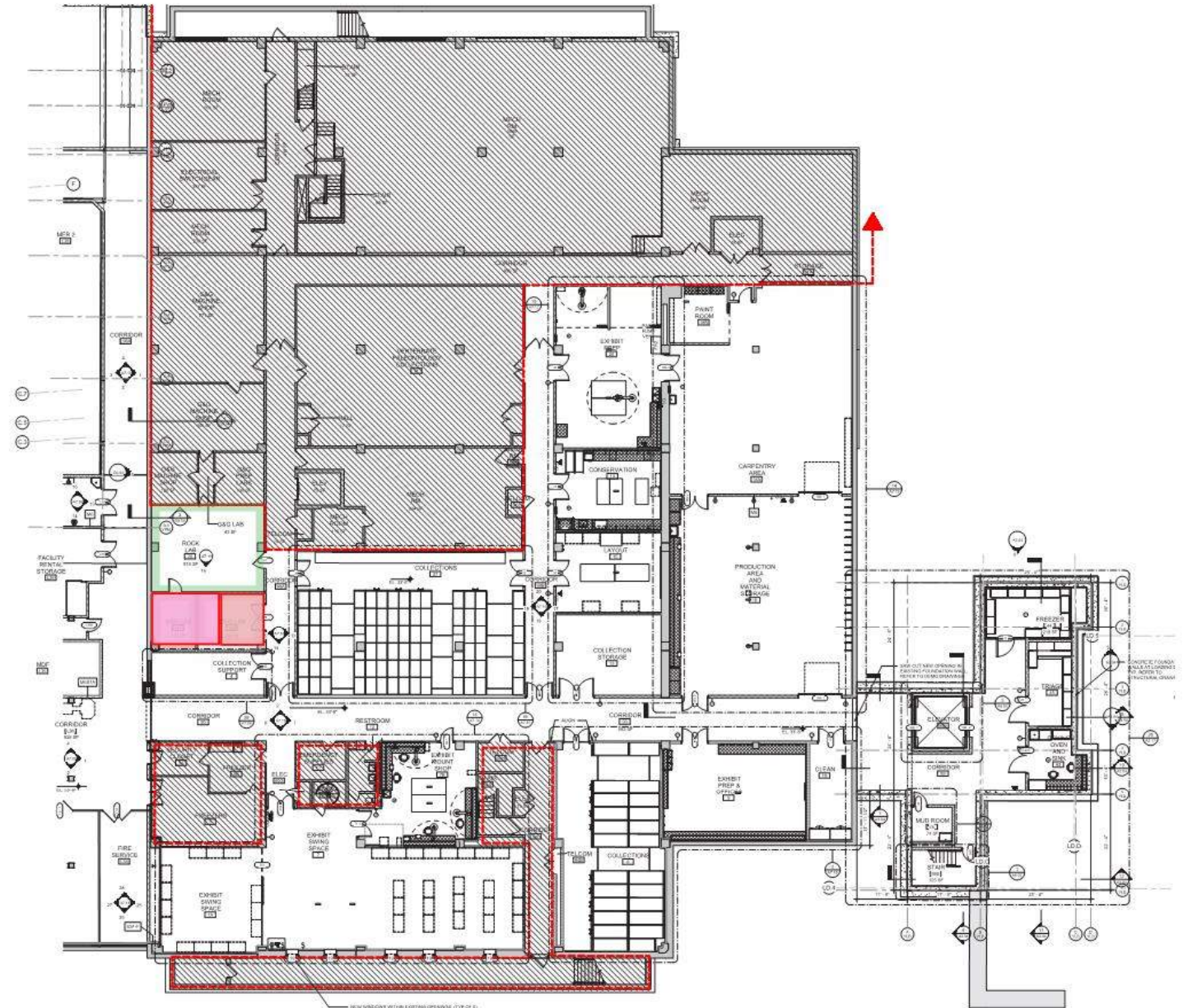
Yale University - Kline Geology Laboratory
Lower Level Floor - Teaching Lab
October 2018

CENTERBROOK



REF: EXISTING LOWER LEVEL FLOOR PLAN.dwg

Existing



NEW LOWER LEVEL FLOOR PLAN.dwg

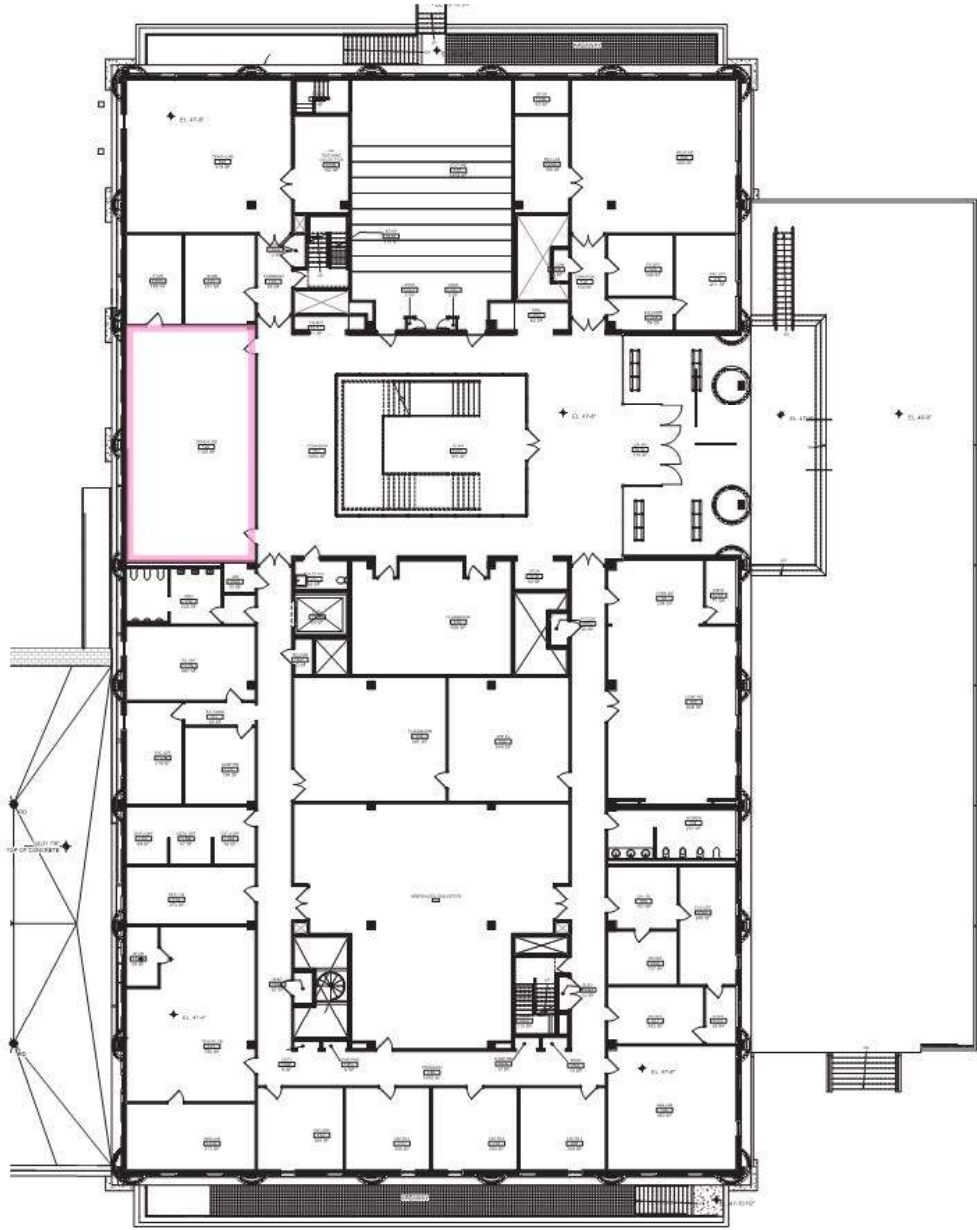
New Configuration

Yale University - Kline Geology Laboratory

1st Floor - Teaching Lab

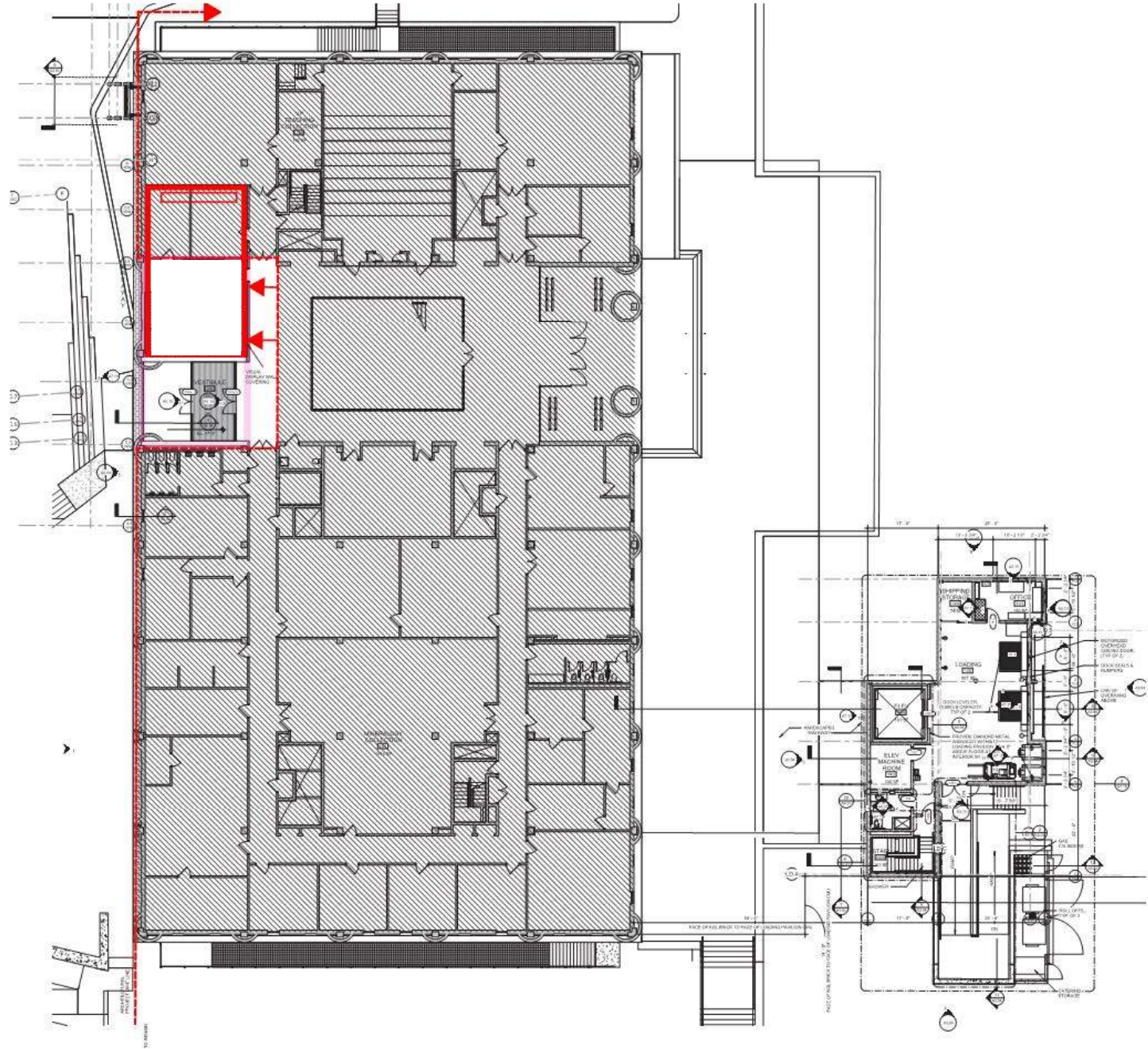
October 2018

CENTERBROOK



EXISTING 1ST FLOOR PLAN - 100

Existing



NEW CONFIGURATION 1ST FLOOR PLAN - 100

New Configuration

